

## KOS MINAR (ADHOR/ADHAUN)

DISTRICT : Kurukshetra; TEHSIL : Kurukshetra

LOCALITY : Adhor/Adhaun (Lat. 30° 02' N; Long. 76° 50' E)

NOTIFICATION NO. : PN, 1083 dated 01.12.1914

APPROACH : AIRPORT : Chandigarh; RAILWAY STATION : Kurukshetra; BUS STATION : Dhurula

**BRIEF HISTORY :** In A.D. 1619, emperor Jahangir ordered Baqir Khan, the Fauzdar of Multan, to erect a *kos-minar* (mile-stone) at every *kos* (3.20 km) on the old imperial route. *Kos-minars* are brick structures standing on square platform covered with plaster. Each *minar* soars from a tapering octagonal base which is separated from the upper circular portion by a moulding.

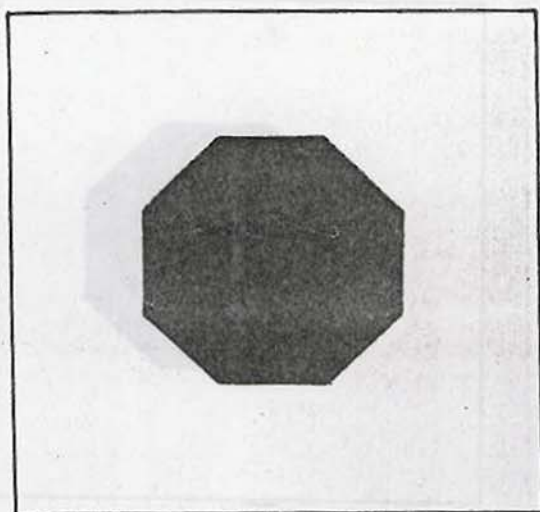
**TOPOGRAPHICAL FEATURES** : Plain terrain

**OWNERSHIP** : Central Government

**IS IT UNDER RELIGIOUS USE ?** : No

**ADMINISTRATIVE CONTROL** : Archaeological Survey of India, Chandigarh Circle, Chandigarh

**PUBLISHED REFERENCES, IF ANY** : (1) Alexander Rogers (tr.), *The Tuzuk-i-Jahangiri* (reprint, Delhi 1968), (2) Subhas Parihar, *The Mughal Monuments in the Punjab and Haryana* (Delhi 1985).



SCALE | 0 | METRES

PLAN





## ANCIENT MOUND (AMIN)

**DISTRICT :** Kurukshetra; **TEHSIL :** Kurukshetra

**LOCALITY :** Amin (Lat. 29° 54' N; Long. 76° 52' E)

**NOTIFICATION NO. :** PN, 16032 dated 04.07.1925

**APPROACH :** AIRPORT : Chandigarh; **RAILWAY STATION :** Amin; **BUS STATION :** Amin

**BRIEF HISTORY :** This mound, known by the name of Abhimanyukhera, is believed to be the site of *Chakra-Vyuha* arranged by the army of the Kauravas, under the command of Dronacharya. Abhimanyu, son of Arjuna, is believed to have been trapped in the *Chakra-Vyuha* and killed here during the Mahabharata war. The mound occupies an area of 650x250 m with a height of 8-10 m. The two inscribed red stone pillars adorned with reliefs of *Yaksha* and other decorative designs of *circa* second century B.C. found here, are at present in the National Museum, New Delhi. Sherds of Painted Grey Ware have also been picked up from the mound.

**TOPOGRAPHICAL FEATURES**

: Plain terrain

**OWNERSHIP**

: Central Government

**IS IT UNDER RELIGIOUS USE ?**

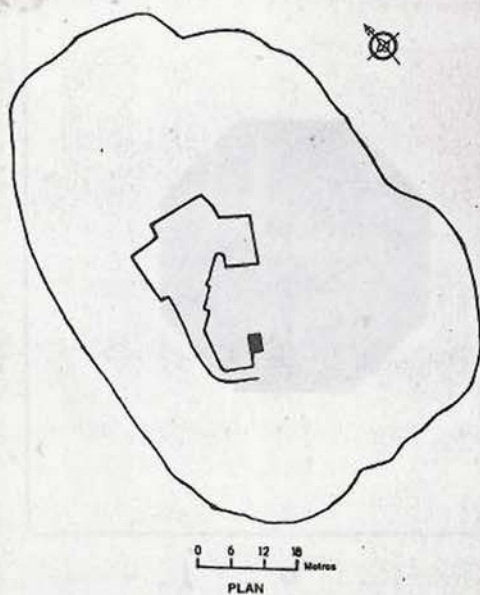
: No

**ADMINISTRATIVE CONTROL**

: Archaeological Survey of India, Chandigarh Circle, Chandigarh

**PUBLISHED REFERENCES, IF ANY**

: (1) *Ancient India*, No. 9, 10 & 11, (2) Suraj Bhan, *Excavation at Mitathal (1968) and other Explorations in the Sutlej-Yamuna Divide* (Kurukshetra 1975).





## KOS MINAR (ADHOR/ADHAUN)

DISTRICT : Kurukshetra; TEHSIL : Kurukshetra

LOCALITY : Adhor/Adhaun (Lat. 30° 02' N; Long. 76° 50' E)

NOTIFICATION NO. : PN, 1083 dated 01.12.1914

APPROACH : AIRPORT : Chandigarh; RAILWAY STATION : Kurukshetra; BUS STATION : Dhurula

BRIEF HISTORY : In A.D. 1619, emperor Jahangir ordered Baqir Khan, the Fauzdar of Multan, to erect a *kos-minar* (mile-stone) at every *kos* (3.20 km) on the old imperial route. *Kos-minars* are brick structures standing on square platform covered with plaster. Each *minar* soars from a tapering octagonal base which is separated from the upper circular portion by a moulding.

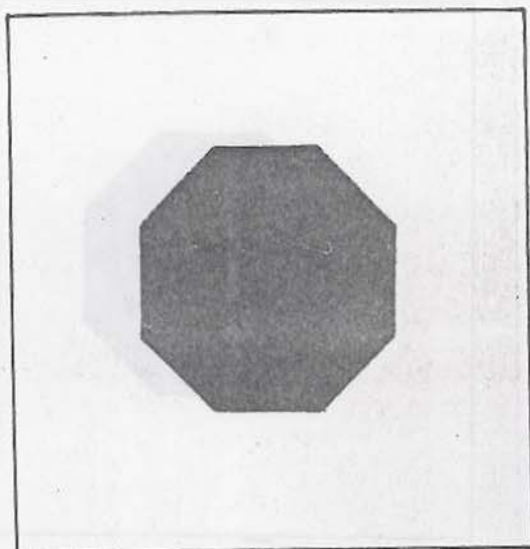
TOPOGRAPHICAL FEATURES : Plain terrain

OWNERSHIP : Central Government

IS IT UNDER RELIGIOUS USE ? : No

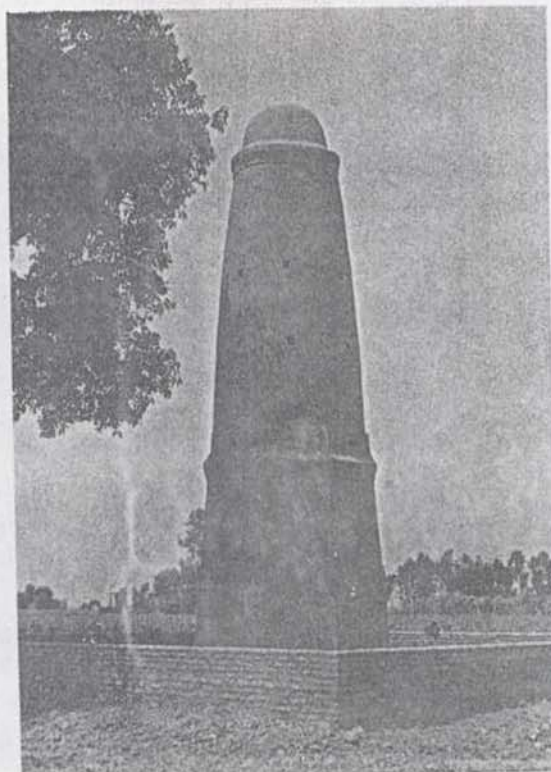
ADMINISTRATIVE CONTROL : Archaeological Survey of India, Chandigarh Circle, Chandigarh

PUBLISHED REFERENCES, IF ANY : (1) Alexander Rogers (tr.), *The Tuzuk-i-Jahangiri* (reprint, Delhi 1968), (2) Subhas Parihar, *The Mughal Monuments in the Punjab and Haryana* (Delhi 1985).



SCALE | 0 | METRES

PLAN





## KOS MINAR (BHIWANI KHERA)

**DISTRICT :** Kurukshetra; **TEHSIL :** Kurukshetra

**LOCALITY :** Bhiwani Khera (Lat. 30° 00' N; Long. 76° 52' E)

**NOTIFICATION NO. :** PN, 1083 dated 01.12.1914

**APPROACH : AIRPORT :** Chandigarh; **RAILWAY STATION :** Kurukshetra; **BUS STATION :** Kurukshetra

**BRIEF HISTORY :** In A.D. 1619, emperor Jahangir ordered Baqir Khan, the Fauzdar of Multan, to erect a *kos-minar* (mile-stone) at every *kos* (3.20 km) on the old imperial route. *Kos-minars* are brick structures standing on square platform covered with plaster. Each *minar* soars from a tapering octagonal base which is separated from the upper circular portion by a moulding.

### TOPOGRAPHICAL FEATURES

: Plain terrain

### OWNERSHIP

: Central Government

### IS IT UNDER RELIGIOUS USE ?

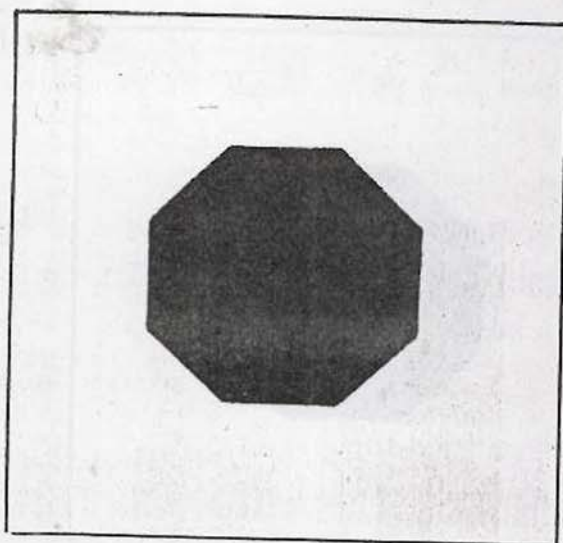
: No

### ADMINISTRATIVE CONTROL

: Archaeological Survey of India, Chandigarh Circle, Chandigarh

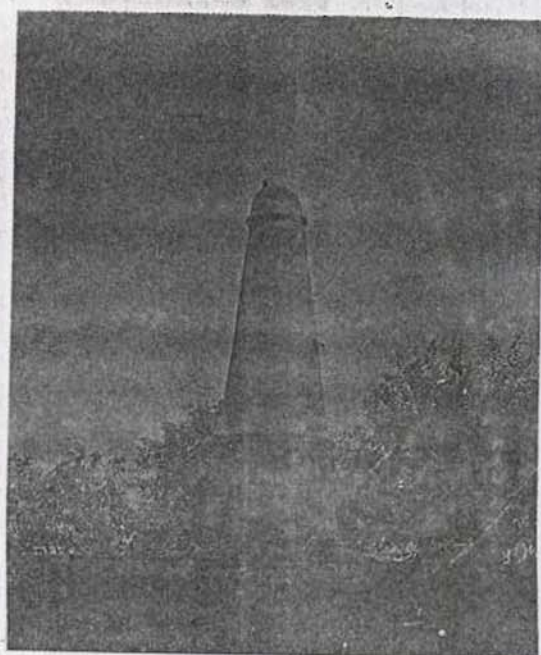
### PUBLISHED REFERENCES, IF ANY

: (1) Alexander Rogers (tr.), *The Tuzuk-i-Jahangiri* (reprint, Delhi 1968), (2) Subhas Parihar, *The Mughal Monuments in the Punjab and Haryana* (Delhi 1985).



SCALE | 0 | METRES

PLAN





## KOS MINAR (FATUHPUR)

DISTRICT : Kurukshetra; TEHSIL : Kurukshetra

LOCALITY : Fatuhpur (Lat. 29° 51' N; Long. 76° 55' E)

NOTIFICATION NO. : PN, 1083 dated 01.12.1914

APPROACH : AIRPORT : Chandigarh; RAILWAY STATION : Amin; BUS STATION : Amin

**BRIEF HISTORY :** In A.D. 1619, emperor Jahangir ordered Baqir Khan, the Fauzdar of Multan, to erect a *kos-minar* (mile-stone) at every *kos* (3.20 km) on the old imperial route. *Kos-minars* are brick structures standing on square platform covered with plaster. Each *minar* soars from a tapering octagonal base which is separated from the upper circular portion by a moulding.

**TOPOGRAPHICAL FEATURES**

: Plain terrain

**OWNERSHIP**

: Central Government

**IS IT UNDER RELIGIOUS USE ?**

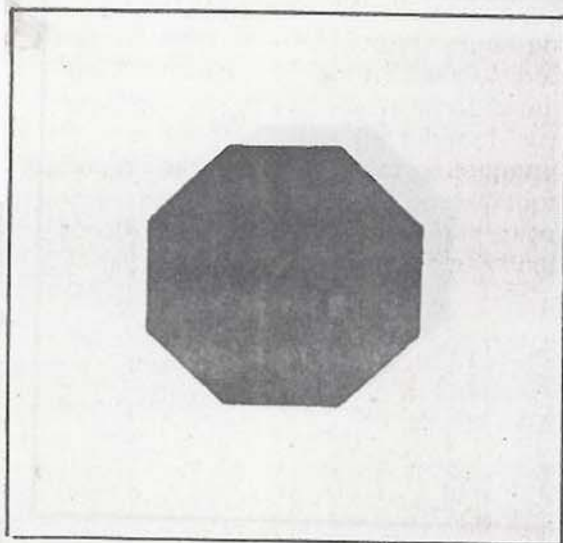
: No

**ADMINISTRATIVE CONTROL**

: Archaeological Survey of India, Chandigarh Circle, Chandigarh

**PUBLISHED REFERENCES, IF ANY**

: (1) Alexander Rogers (tr.), *The Tuzuk-i-Jahangiri* (reprint, Delhi 1968), (2) Subhas Parihar, *The Mughal Monuments in the Punjab and Haryana* (Delhi 1985).



SCALE | 0 | METRES

PLAN





## KOS MINAR (MOHRI)

DISTRICT : Kurukshetra; TEHSIL : Shahabad

LOCALITY : Mohri (Lat. 30° 15' N; Long. 76° 51' E)

NOTIFICATION NO. : PN, 1083 dated 01.12.1914

APPROACH : AIRPORT : Chandigarh; RAILWAY STATION : Ambala; BUS STATION : Ambala

BRIEF HISTORY : In A.D. 1619, emperor Jahangir ordered Baqir Khan, the Fauzdar of Multan, to erect a *kos-minar* (mile-stone) at every *kos* (3.20 km) on the old imperial route. *Kos-minars* are brick structures standing on square platform covered with plaster. Each *minar* soars from a tapering octagonal base which is separated from the upper circular portion by a moulding.

### TOPOGRAPHICAL FEATURES

: Plain terrain

### OWNERSHIP

: Central Government

### IS IT UNDER RELIGIOUS USE ?

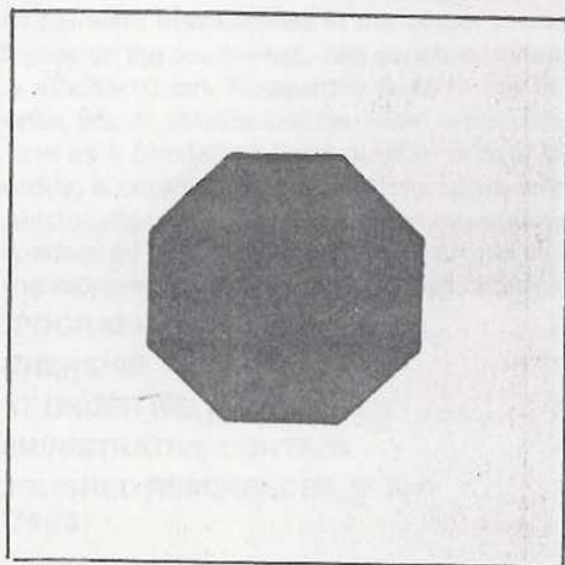
: No

### ADMINISTRATIVE CONTROL

: Archaeological Survey of India, Chandigarh Circle, Chandigarh

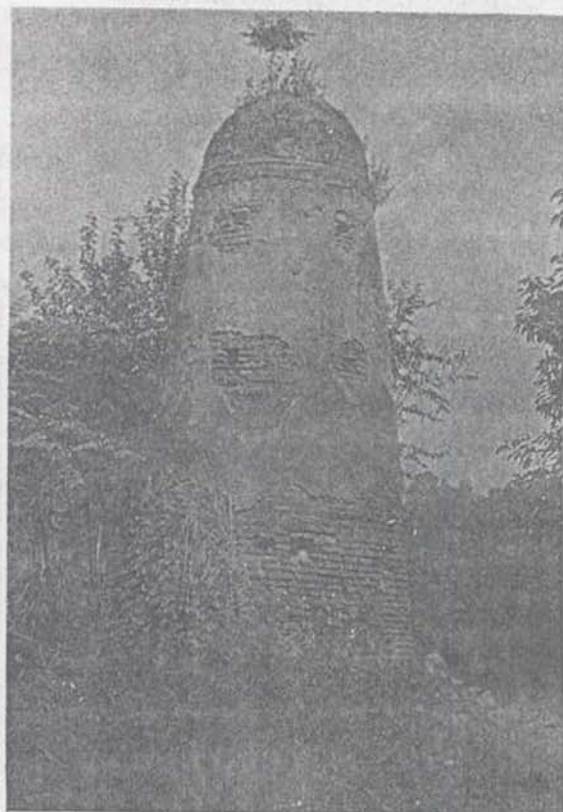
### PUBLISHED REFERENCES, IF ANY

: (1) Alexander Rogers (tr.), *The Tuzuk-i-Jahangiri* (reprint, Delhi 1968), (2) Subhas Parihar, *The Mughal Monuments in the Punjab and Haryana* (Delhi 1985).



SCALE | 0 | METRES

PLAN





## KOS MINAR (THANESAR)

**DISTRICT :** Kurukshetra; **TEHSIL :** Shahabad

**LOCALITY :** Thanesar (Darakalan) (Lat. 29° 58' N; Long. 76° 50' E)

**NOTIFICATION NO. :** PN, 1083 dated 01.12.1914

**APPROACH : AIRPORT :** Chandigarh; **RAILWAY STATION :** Kurukshetra; **BUS STATION :** Kurukshetra

**BRIEF HISTORY :** In A.D. 1619, emperor Jahangir ordered Baqir Khan, the Fauzdar of Multan, to erect a *kos-minar* (mile-stone) at every *kos* (3.20 km) on the old imperial route. *Kos-minars* are brick structures standing on square platform covered with plaster. Each *minar* soars from a tapering octagonal base which is separated from the upper circular portion by a moulding.

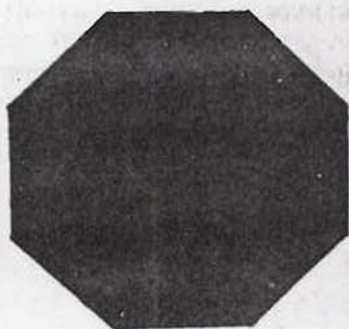
**TOPOGRAPHICAL FEATURES** : Plain terrain

**OWNERSHIP** : Central Government

**IS IT UNDER RELIGIOUS USE ?** : No

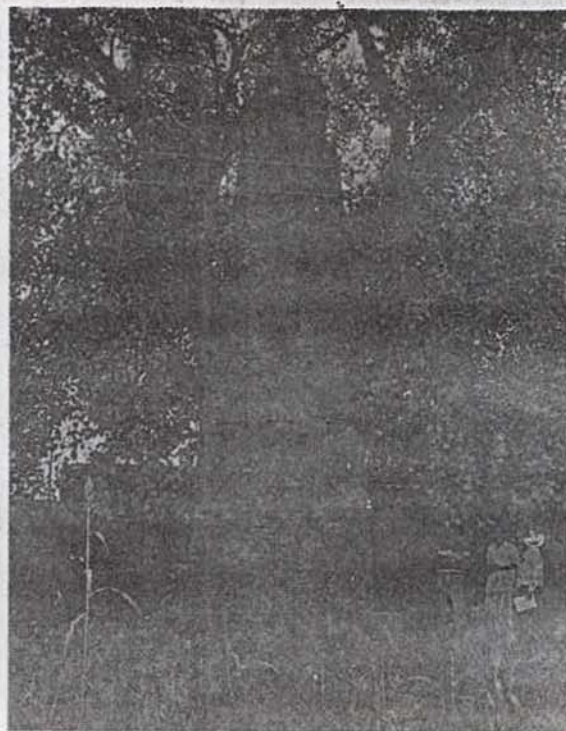
**ADMINISTRATIVE CONTROL** : Archaeological Survey of India, Chandigarh Circle, Chandigarh

**PUBLISHED REFERENCES, IF ANY** : (1) Alexander Rogers (tr.), *The Tuzuk-i-Jahangiri* (reprint, Delhi 1968), (2) Subhas Parihar, *The Mughal Monuments in the Punjab and Haryana* (Delhi 1985).



0 1 2  
Metres

PLAN





## PATHAR MASJID (THANESAR)

DISTRICT : Kurukshetra; TEHSIL : Kurukshetra

LOCALITY : Thanesar (Lat. 29° 58' N; Long. 76° 50' E)

NOTIFICATION NO. : PN, 657, dated 15.07.1912

APPROACH : AIRPORT : Delhi/Chandigarh; RAILWAY STATION : Kurukshetra; BUS STATION : Kurukshetra

**BRIEF HISTORY :** The Pathar Masjid is built of red sandstone and is remarkable for its fluted minarets which are attached to its back wall. The ceiling of the mosque resting on pillars is decorated with floral designs carved in low relief. The pillars are also profusely decorated with floral designs, while the bases over the mouldings show *chaitya*-window motifs. The *qibla* in the centre of the western wall, is flanked on either side by two arched niches inscribed with verses from the *Quran*. The masonry terrace forming the front court was added at a later date. The *masjid* is assignable to seventeenth century A.D.

### TOPOGRAPHICAL FEATURES

: Plain terrain

### OWNERSHIP

: Central Government

### IS IT UNDER RELIGIOUS USE ?

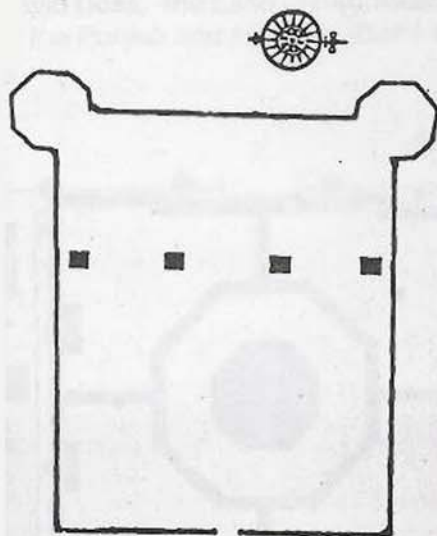
: No

### ADMINISTRATIVE CONTROL

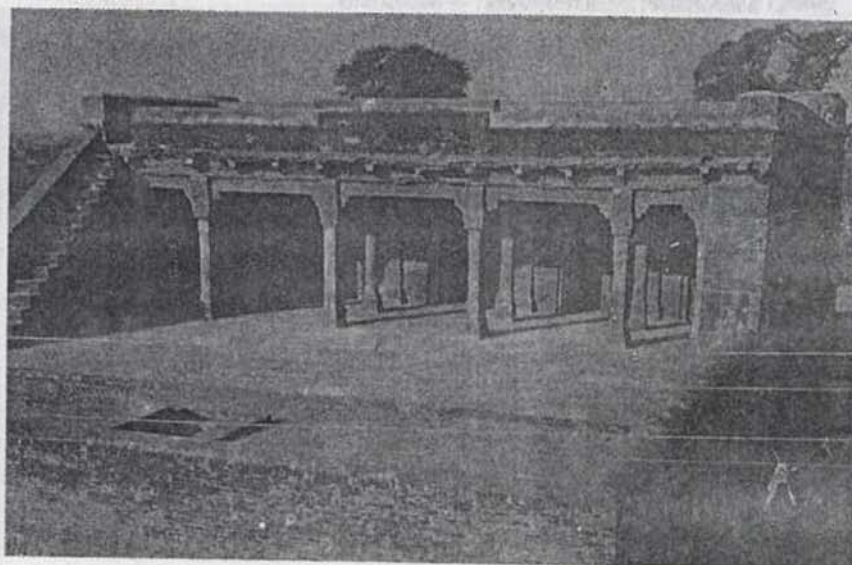
: Archaeological Survey of India, Chandigarh Circle, Chandigarh

### PUBLISHED REFERENCES, IF ANY

: (1) Alexander Cunningham, *Archaeological Survey of India, Four Reports Made During the Years 1862-63-64-65*, Vol. II (reprint, Varanasi 1972), (2) *Annual Report on Indian Epigraphy for 1973-74*, Nos. D, 122-127, (3) C.J. Rodgers, *Report of the Punjab Circle of the Archaeological Survey for 1888-89*, (Calcutta 1891), (4) V.P.Dheer (ed.), *Haryana District Gazetteers, Karnal* (Chandigarh 1976).



SKETCH PLAN





## KOS MINAR (SARAI SUKHI)

**DISTRICT :** Kurukshetra; **TEHSIL :** Kurukshetra

**LOCALITY :** Sarai Sukhi (Lat. 30° 04' N; Long. 76° 50' E)

**NOTIFICATION NO. :** PN, 1083 dated 01.12.1914

**APPROACH : AIRPORT :** Chandigarh; **RAILWAY STATION :** Dhirpur; **BUS STATION :** Dhurala

**BRIEF HISTORY :** In A.D. 1619, emperor Jahangir ordered Baqir Khan, the Fauzdar of Multan, to erect a *kos-minar* (mile-stone) at every *kos* (3.20 km) on the old imperial route. *Kos-minars* are brick structures standing on square platform covered with plaster. Each *minar* soars from a tapering octagonal base which is separated from the upper circular portion by a moulding.

**TOPOGRAPHICAL FEATURES**

: Plain terrain

**OWNERSHIP**

: Central Government

**IS IT UNDER RELIGIOUS USE ?**

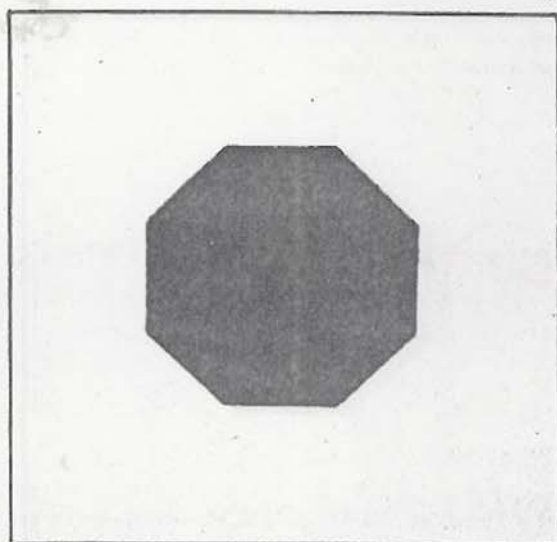
: No

**ADMINISTRATIVE CONTROL**

: Archaeological Survey of India, Chandigarh Circle, Chandigarh

**PUBLISHED REFERENCES, IF ANY**

: (1) Alexander Rogers (tr.), *The Tuzuk-i-Jahangiri* (reprint, Delhi 1968), (2) Subhas Parihar, *The Mughal Monuments in the Punjab and Haryana* (Delhi 1985).



SCALE | 0 | METRES

**PLAN**





## KOS MINAR (SHAHABAD)

DISTRICT : Kurukshetra; TEHSIL : Shahabad

LOCALITY : Shahabad (Lat. 30° 10' N; Long. 76° 52' E)

NOTIFICATION NO. : PN, 1083 dated 01.12.1914

APPROACH : AIRPORT : Chandigarh; RAILWAY STATION : Shahabad; BUS STATION : Shahabad

BRIEF HISTORY : In A.D. 1619, emperor Jahangir ordered Baqir Khan, the Fauzdar of Multan, to erect a *kos-minar* (mile-stone) at every *kos* (3.20 km) on the old imperial route. *Kos-minars* are plastered brick structures standing on square platform. Each *minar* soars from a tapering octagonal base which is separated from the upper circular portion by a moulding.

TOPOGRAPHICAL FEATURES

: Plain terrain

OWNERSHIP

: Central Government

IS IT UNDER RELIGIOUS USE ?

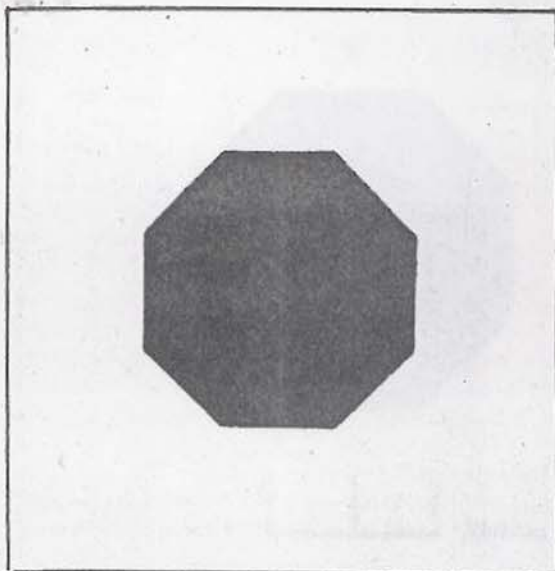
: No

ADMINISTRATIVE CONTROL

: Archaeological Survey of India, Chandigarh Circle, Chandigarh

PUBLISHED REFERENCES, IF ANY

: (1) Alexander Rogers (tr.), *The Tuzuk-i-Jahangiri* (reprint, Delhi 1968), (2) Subhas Parihar, *The Mughal Monuments in the Punjab and Haryana* (Delhi 1985).



SCALE | 0 | METRES

PLAN





## KOS MINAR (ZAINPURA)

DISTRICT : Kurukshetra; TEHSIL : Shahabad

LOCALITY : Zainpura (Lat. 30° 12' N; Long. 76° 51' E)

NOTIFICATION NO. : PN, 1083 dated 01.12.1914

APPROACH : AIRPORT : Chandigarh; RAILWAY STATION : Shahabad; BUS STATION : Shahabad

BRIEF HISTORY : In A.D. 1619, emperor Jahangir ordered Baqir Khan, the Fauzdar of Multan, to erect a *kos-minar* (mile-stone) at every *kos* (3.20 km) on the old imperial route. *Kos-minars* are plastered brick structures standing on square platform. Each *minar* soars from a tapering octagonal base which is separated from the upper circular portion by a moulding.

### TOPOGRAPHICAL FEATURES

: Plain terrain

### OWNERSHIP

: Central Government

### IS IT UNDER RELIGIOUS USE ?

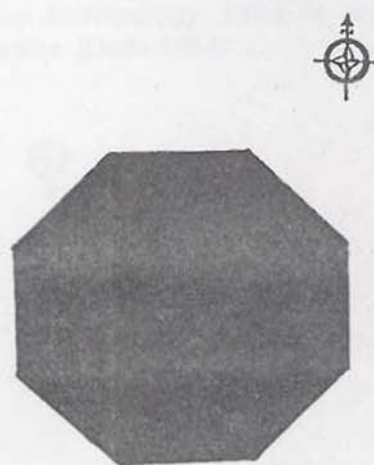
: No

### ADMINISTRATIVE CONTROL

: Archaeological Survey of India, Chandigarh Circle, Chandigarh

### PUBLISHED REFERENCES, IF ANY

: (1) Alexander Rogers (tr.), *The Tuzuk-i-Jahangiri* (reprint, Delhi 1968), (2) Subhas Parihar, *The Mughal Monuments in the Punjab and Haryana* (Delhi 1985).



PLAN

